

## BRAF(D594G)

**Catalog Number:** 26200

**Gene Symbol:** BRAF, BRAF1, RAFB1

**Description:** Anti-BRAF(D594G) Mouse Monoclonal Antibody

**Background:** BRAF belongs to a family of serine-threonine protein kinases. As a part of a signaling pathway known as the RAS/MAPK pathway, it plays an important part in many cellular processes. The processes include cell proliferation, differentiation, and transcriptional regulation. Mutations in the BRAF gene cause diseases. Inherited mutations in BRAF cause cardiofaciocutaneous syndrome. Acquired mutations in BRAF have been found in cancers.

**Immunogen:** A synthetic peptide from the internal region of BRAF which includes the mutation of D594G, human origin.

**Tested Applications:** ELISA, WB

**Recommended Dilutions:**

ELISA: 1:1000-1:5000

WB: 1:1000-1:5000

**Concentration:** 1 mg/ml

**Host:** Mouse

**Clonality:** Monoclonal

**Isotype:** IgG

**Purity:** Purified from ascites

**Format:** Liquid

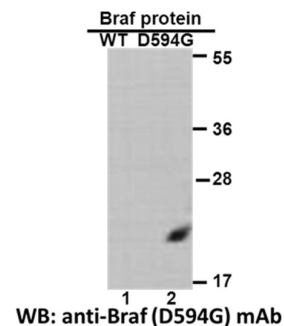
**Preservative:** No

**Constituents:** PBS (without Mg<sup>2+</sup> and Ca<sup>2+</sup>), pH7.4, 150 mM NaCl, 50% glycerol

**Species Reactivity:** Recognizes D594G mutant, but not wild-type BRAF of vertebrates.

**Storage Conditions:** Store at -20°C. Avoid freeze / thaw cycles.

### Western blot:



### Western blot analysis of recombinant BRAF (D594G) and wild type proteins.

Purified His-tagged BRAF (D594G) protein (lane 2) and corresponding wild type protein (lane 1) were blotted with anti-BRAF (D594G) monoclonal antibody (Cat. # 26200)

FOR RESEARCH USE ONLY. NOT FOR DIAGNOSTIC APPLICATIONS